



Fearless & Fun

... LINGERIE ...

Before Sunrise

Table of Contents

011	<i>Tiny Thin Lace Micro Hipster Panties</i>	43
D034	<i>Almost Invisible Micro G-String</i>	8
017	<i>Cross Open Front and Back Hipster Panties</i>	5
018	<i>Crotchless Lace-up Hipster Panties BEAUTIFUL LOLA</i>	16
018P	<i>Lace Up Crotchless Hipster Panties</i>	35
035	<i>Thin Floral Lace Crotchless G-String</i>	20
D033	<i>Delicate Cage Two tone Lace Shorts</i>	37
D035	<i>Sexy Cheeky Retro Shorts</i>	32
D043	<i>Very Sexy 2 Pc. Gathered Tulle Set</i>	9
D049	<i>Peek-a-Boo Body with Lace-up Front CYNTHIA</i>	38
D051	<i>Nude Tulle Embroidered Body CHASTITY</i>	46
H0014	<i>Chemise with Embroidered Cups</i>	10
D053	<i>See Thru Jeweled Bralette Set ELLIE</i>	21
D054	<i>Cupless Teddy with Jewelry Front BEATRICE</i>	22
D057	<i>Pearl Crotchless G-string ABIGALE</i>	23
D058	<i>Cut-Out Cheeks Lace Shorts ADELLA</i>	11
D059	<i>Garter Belt AGNES</i>	12
D062	<i>Garter Body AMELIA</i>	34
D063	<i>Swarovski Rhinestone Body EDNA</i>	17
D064	<i>Strappy Garter Belt ELIZA</i>	33
D066	<i>Victorian G-String CONSTANCE</i>	24
D067	<i>Victorian Strappy Open Thong ESTHER</i>	40
D069	<i>Lace-up All Body ETHEL</i>	29
D070	<i>Waist-Crotch Accessory BESSIE</i>	50
D092	<i>Almost Invisible Micro G-string GINA</i>	48
H001	<i>Hot Pink Brazilian Cut Breathable Panties</i>	6
H003	<i>Floral Lace and Bead Strand Crotchless G-String</i>	36
H006	<i>White Lace G-String FIRST WEDDING NIGHT</i>	42
H007	<i>Rosette Bows Romantic G-String</i>	49
H008	<i>Lace Up Red Floral Lace Body</i>	15
H0010	<i>Body Sue with Embroidery Tulle</i>	39
H0011	<i>Beautiful Lace Up Set LIANA</i>	45
H0012	<i>Hot Chemise with Open Back</i>	7
H057	<i>Lace-up Front and Back Crotchless Panties</i>	4
I060	<i>Diagonal Straps Embroidered Thong ALLIE</i>	47
I071	<i>Victorian Cheeky Look G-String Garter Belt FRANCES</i>	25
I072	<i>Crotchless and Cupless Body HENRIETTA</i>	28
I073	<i>Peek-a-Boo Navy Blue Body ELLA</i>	27
I074	<i>Peek-a-Boo White Lace Body EUDORA</i>	41
L061	<i>Apricot Sand Lace Peek-a-Boo Set ALVA</i>	30
L068	<i>Strap Rays Micro G-String LIZA</i>	13
L078	<i>Bridal White Lace Body GERTRUDE</i>	44
L079	<i>Asymetric Thong FIDELIA</i>	14
L080	<i>Kinky Cross Strap Body HATTIE</i>	19
L081	<i>Strappy Black Body HELENE</i>	18

This time take fun to the next level and think about dazzling experiences

Before Sunrise

D048
BODY WITH LACE-UP FRONT
EDWINA

Beautiful body with lace-up front panel and peek-a-boo micro cups. Comes Boxed. Color: Hot Pink/Black.

One Size fits most: Height 5' to 5'10", Weight 90 to 155 lbs.

lacy seduction



D039
SEXY SATIN LACE UP PEEK-A-BOO SET

Very sexy satin lace-up set includes peek-a-boo bra and g-string with huge side bows. Comes Boxed. Color: Black/Hot Pink.

One Size fits most: Height 5' to 5'10", Weight 90 to 155 lbs.

tantalizing bows



L076
GARTER SET FLORENCE

Three piece set features beautiful cleavage bra with criss-cross back straps, matching g-string and garter belt mini skirt, lots of small bows.

*Comes boxed.
Color: Hot Pink/Black.*

One Size fits most: Height 5' to 5'10", Weight 90 to 155 lbs.





H057
LACE-UP FRONT AND BACK
CROTCHLESS PANTIES

Beautiful lace side panels with lace-up front and back panties. Comes Packaged. Color: Hot Pink/Black.

One Size fits most: Height 5' to 5'10", Weight 90 to 155 lbs.



017
**CROSS OPEN FRONT AND
BACK HIPSTER PANTIES**

*Cross open front and back
hipster sheer mesh panties.
Comes Packaged.
Color: Black/Hot Pink.*

*One Size fits most: Height 5' to
5'10", Weight 90 to 155 lbs.*

*revealing sheer
hip*





H001
HOT PINK BRAZILIAN CUT
BREATHABLE PANTIES

*Hot pink tulle and lace trim
Brazilian cut breathable
panties.
Comes Packaged.
Color: Hot Pink.*

*One Size fits most: Height 5' to
5'10", Weight 90 to 155 lbs.*

*hot as hell
match*



H0012
HOT CHEMISE WITH OPEN
BACK

Chemise features triangle cups and open back made of tulle and lace trim. Shown with No. H001 panties. Packed in exclusive magenta gift box. Color: Hot Pink.

One Size fits most: Height 5' to 5'10", Weight 90 to 155 lbs.



D034
ALMOST INVISIBLE MICRO
G-STRING

Playful crotchless micro g-string with almost invisible waist straps and very small side bows.

*Comes Packaged.
Color: Black/Hot Pink.*

One Size fits most: Height 5' to 5'10", Weight 90 to 155 lbs.





D043
**VERY SEXY 2 PC. GATHERED
TULLE SET**

Bra and g-string have two tone elastic strapping with gathered tulle trim and ribbon bows. Packed in exclusive magenta gift box. Color: Black/Red.

One Size fits most: Height 5' to 5'10", Weight 90 to 155 lbs.

extra provocative



H0014
CHEMISE WITH
EMBROIDERED CUPS

Chemise features embroidered cups and open sides with the ribbon ties. Packed in exclusive magenta gift box. Color: As Shown.

One Size fits most: Height 5' to 5'10", Weight 90 to 155 lbs.

*look-at-me
chemise*



D058
CUT-OUT CHEEKS LACE
SHORTS ADELLA

Peek-a-boo design shorts with Svarovski crystals and Huge red color bows features crotchless front with straps for that exotic look. Packed in exclusive magenta gift box. Color: Black/Red.

One Size fits most: Height 5' to 5'10", Weight 90 to 155 lbs.



D059
GARTER BELT AGNES

Victorian style garter belt features lace-up front trimmed with rosette bow and very rich and sexy design rear. Shown with No. L093 Choker Necklace. Packed in exclusive magenta gift box. Color: Red/Black.

One Size fits most: Height 5' to 5'10", Weight 90 to 155 lbs.



L068
STRAP RAYS MICRO
G-STRING LIZA

Very sexy micro g-string has floral stretch lace front panel, huge ring and lots of straps. Shown with No. L095 Choker Necklace. Comes Packaged. Color: Black/Red.

One Size fits most: Height 5' to 5'10", Weight 90 to 155 lbs.

*addicted to
your love*



L079
ASYMETRIC THONG FIDELIA

Thong features wide red lace hip detail and tulle crotch. Lots of flirty bows in the front and back of the garment. Shown with No. L094 Choker Necklace. Comes Packaged. Color: Red/Black.

One Size fits most: Height 5' to 5'10", Weight 90 to 155 lbs.

flirty and fun



H008
LACE UP RED FLORAL LACE
BODY

Teddy/body has lace up cups and waist. A sexy model for a special night. Great gift idea. Packed in exclusive magenta gift box. Color: Red/Black.

One Size fits most: Height 5' to 5'10", Weight 90 to 155 lbs.



018
CROTCHLESS LACE-UP
HIPSTER PANTIES BEAUTIFUL
LOLA

Panties feature lace-up front and back details, beautiful thin lace with low rise waist line. Comes Packaged. Color: Red/Black.

One Size fits most: Height 5' to 5'10", Weight 90 to 155 lbs.

lacy reds



D063
SWAROVSKI RHINESTONE
BODY EDNA

*Elegant and sexy body features
Swarovski crystals front and
minimal coverage back with
lots of gold color metal rings.
Packed in exclusive magenta
gift box.
Color: Red.*

*One Size fits most: Height 5' to
5'10", Weight 90 to 155 lbs.*





L081
STRAPPY BLACK BODY
HELENE

Body features thin black lace cups and black straps with micro g-string bottom. Contrasting bows in the front and back. Packed in exclusive magenta gift box. Color: Black/Copper.

One Size fits most: Height 5' to 5'10", Weight 90 to 155 lbs.



L080
KINKY CROSS STRAP BODY
HATTIE

Body features diagonal cross details and lots of straps all over the body. Packed in exclusive magenta gift box. Color: Black/Gold.

One Size fits most: Height 5' to 5'10", Weight 90 to 155 lbs.

bold and unpredictable



035
THIN FLORAL LACE
CROTCHLESS G-STRING

Thin floral lace crotchless g-string with gold color side rings and satin bow in the front.

*Comes Packaged.
Color: Black.*

One Size fits most: Height 5' to 5'10", Weight 90 to 155 lbs.



D053
SEE THRU JEWELED
BRALETTE SET ELLIE

See through jeweled bralette set made of tulle and lace trim. Cris-cross back adjustable bra straps. Revealing design for dear-to-wear look. Packed in exclusive magenta gift box. Color: Nude/Black.

One Size fits most: Height 5' to 5'10", Weight 90 to 155 lbs.

sheer lust





D054
CUPLESS TEDDY WITH
JEWELRY FRONT BEATRICE

Beautiful stretch floral lace front panel features cupless chest with huge faux jewelry detail front. Packed in exclusive magenta gift box. Color: Black/White.

One Size fits most: Height 5' to 5'10", Weight 90 to 155 lbs.

a peek of skin obsession



D057
PEARL CROTCHLESS
G-STRING ABIGALE

*Swarovski crystal and faux
pearl beads crotchless g-string
features strappy design back
with minimal rear coverage
and victorian style stretch lace
front.*

*Comes Packaged.
Color: Black/White.*

*One Size fits most: Height 5' to
5'10", Weight 90 to 155 lbs.*



D066
VICTORIAN G-STRING
CONSTANCE

Stretch rose lace front panels and minimal coverage strappy rear with side bows. Extravagant design for dear-to-wear look. Comes Packaged. Color: Navy Blue/Burgundy.

One Size fits most: Height 5' to 5'10", Weight 90 to 155 lbs.



1071
VICTORIAN CHEEKY LOOK
G-STRING GARTER BELT
FRANCES

Extravagant and sexy g-string features lots of beautiful straps for hip coverage, bows and beautiful color match for laces.

*Garter holders attached.
Comes Packaged.*

Color: Navy Blue/Burgundy.

One Size fits most: Height 5' to 5'10", Weight 90 to 155 lbs.

aristocratic feel



taste of sin



1073
PEEK-A-BOO NAVY BLUE
BODY ELLA

Stretch rose lace front panels and minimal coverage strappy rear with lots of bows bigger and small. Extravagant design for dear-to-wear look. Packed in exclusive magenta gift box. Color: Navy Blue/Burgundy.

One Size fits most: Height 5' to 5'10", Weight 90 to 155 lbs.



1072
CROTCHLESS AND CUPLESS
BODY HENRIETTA

Body features two color trim laced-up front with crotchless and cupless look. Fabric consists of nylon and spandex. Packed in exclusive magenta gift box. Color: Black/Copper.

One Size fits most: Height 5' to 5'10", Weight 90 to 155 lbs.

pure glamour



D069
LACE-UP ALL BODY ETHEL

Body features lots of lace-up details. Peek-a-boo effect design. Fabric consists of nylon and spandex. Packed in exclusive magenta gift box. Color: Black/Copper.

One Size fits most: Height 5' to 5'10", Weight 90 to 155 lbs.



L061
APRICOT SAND LACE PEEK-A-BOO SET ALVA

Lace-up cups and asymmetric lace-up bottom g-string trimmed with beautiful elastic and 2 huge 7/16 inch Svarovski crystals. Bra has criss-cross shoulder straps. Made of European quality trims and apricot sand color lace (81.5% nylon, 12.5% spandex, 6% viscose). Packed in exclusive magenta gift box.

One Size fits most: Height 5' to 5'10", Weight 90 to 155 lbs.

sparkle and shine





D035
SEXY CHEEKY RETRO
SHORTS

Cheeky lace shorts with bow detail front, high waist line and side ties.

Comes Packaged.

Color: Peach/Black.

One Size fits most: Height 5' to 5'10", Weight 90 to 155 lbs.

sensual and edgy



D064
STRAPPY GARTER BELT ELIZA

Garter belt consists of straps and bows, gold color metal rings and stocking holders. Could be worn with stockings only. Packed in exclusive magenta gift box. Color: Nude/Black.

One Size fits most: Height 5' to 5'10", Weight 90 to 155 lbs.





D062
GARTER BODY AMELIA

Peek-a-boo design garter-body features frilly shoulder straps, beautiful Victorian lace side panels with stocking holders attached, criss-cross design back with a bow. Could be worn with stockings only. Packed in exclusive magenta gift box. Color: Pink/Black.

One Size fits most: Height 5' to 5'10", Weight 90 to 155 lbs.



018P
LACE UP CROTCHLESS
HIPSTER PANTIES

*Lace-up crotchless hipster
panties made of thin beautiful
lace.
Comes Packaged.
Color: Pink/Black.*

*One Size fits most: Height 5' to
5'10", Weight 90 to 155 lbs.*

men-focused



H003
FLORAL LACE AND BEAD
STRAND CROTCHLESS
G-STRING

Playful crotchless g-string has detachable beads. Comes Packaged. Color: Black.

One Size fits most: Height 5' to 5'10", Weight 90 to 155 lbs.



D033
DELICATE CAGE TWO TONE
LACE SHORTS

*Delicate two tone lace shorts
for everyday wear. It features
cage strapping in the back.
Comes Packaged.
Color: White/Black.*

*One Size fits most: Height 5' to
5'10", Weight 90 to 155 lbs.*

always sexy



D049
PEEK-A-BOO BODY WITH
LACE-UP FRONT CYNTHIA

Crotchless and cupless body with lace-up front panel features minimal coverage rear and floral lace front panel trimmed with lots of bows. Packed in exclusive magenta gift box. Color: White/Yellow-Green.

One Size fits most: Height 5' to 5'10", Weight 90 to 155 lbs.

flirty bride



H0010
BODY SUE WITH
EMBROIDERY TULLE

Body Sue features embroidered tulle details and beautiful elastic straps. Packed in exclusive magenta gift box. Color: White.

One Size fits most: Height 5' to 5'10", Weight 90 to 155 lbs.





D067
VICTORIAN STRAPPY OPEN
THONG ESTHER

Thong has covered hips and open crotch. Extravagant and rich look design, made of thin tulle and elastic knitted trim. Fabric consists of 85% nylon, 15% spandex. Packed in exclusive magenta gift box. Color: White.

One Size fits most: Height 5' to 5'10", Weight 90 to 155 lbs.



I074
PEEK-A-BOO WHITE LACE
BODY EUDORA

Body features open cups design with lots of bows and g-string style rear. Packed in exclusive magenta gift box. Color: White/Copper.

One Size fits most: Height 5' to 5'10", Weight 90 to 155 lbs.

white elegance





H006
WHITE LACE G-STRING FIRST WEDDING NIGHT

White lace g-string FIRST WEDDING NIGHT with four gold color rings and beautiful lace straps. Best quality European laces and elastic bands. Comes Packaged. Color: White.

One Size fits most: Height 5' to 5'10", Weight 90 to 155 lbs.

*unforgettable
micro treat*



011
TINY THIN LACE MICRO
HIPSTER PANTIES

*Panties feature thin floral lace
and a bow detail in the front.
Comes Packaged.
Color: White/Baby Pink.*

*One Size fits most: Height 5' to
5'10", Weight 90 to 155 lbs.*



L078
BRIDAL WHITE LACE BODY
GERTRUDE

Body is made of white lace and beautiful trims with lots of fun straps. Great outfit for brides. Packed in exclusive magenta gift box. Color: White.

One Size fits most: Height 5' to 5'10", Weight 90 to 155 lbs.



H0011
BEAUTIFUL LACE UP SET
LIANA

Two piece set Liana features lace up cups and g-string with bows. Packed in exclusive magenta gift box. Color: Nude.

One Size fits most: Height 5' to 5'10", Weight 90 to 155 lbs.

killer nude



D051
NUDE TULLE EMBROIDERED
BODY CHASTITY

Unique design body has very attractive features like cross straps and bows. Nude color tulle is close to invisible on the body. Made of 36% viscose, 9% polyester, 55% nylon embroidered tulle. Packed in exclusive magenta gift box. Color: Nude/Burgundy.

One Size fits most: Height 5' to 5'10", Weight 90 to 155 lbs.

Burgundy embroidery



1060
DIAGONAL STRAPS
EMBROIDERED THONG ALLIE

Minimal coverage thong features embroidered stretch tulle front panel, gold color metal rings and beautiful elastic diagonal straps. Made of 36% viscose, 9% polyester, 55% nylon tulle. Packed in exclusive magenta gift box. Color: Nude/Burgundy.

One Size fits most: Height 5' to 5'10", Weight 90 to 155 lbs.



D092
ALMOST INVISIBLE MICRO
G-STRING GINA

Almost invisible micro g-string GINA has purple bows and gold color straps. Comes Packaged. Color: Lilac/Gold.

One Size fits most: Height 5' to 5'10", Weight 90 to 155 lbs.



H007
ROSETTE BOWS ROMANTIC
G-STRING

*Romantic g-string with
rosettes and beautiful
embroidered tulle front detail.
Comes Packaged.
Color: Nude/Grey.*

*One Size fits most: Height 5' to
5'10", Weight 90 to 155 lbs.*



D070
WAIST-CROTCH ACCESSORY
BESSIE

Beautiful lace with perfectly matching elastic trim and bows with Swarovski crystals. Minimal coverage back. Made of European quality trims and lace (81.5% nylon, 12.5% spandex, 6% viscose). Packed in exclusive magenta gift box. Color: Black/Burgundy.

One Size fits most: Height 5' to 5'10", Weight 90 to 155 lbs.

foxy chic



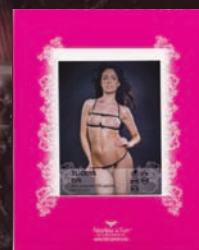
PINK
PINK PACKAGE FOR SMALL
LINGERIE PIECES

Package shows both sides of garment thru plastic. Also has rack hole on the top. All one piece garments like panties arrive packed in this type of package by default.



P001
EXCLUSIVE MAGENTA
PACKAGE BOX

Package shows front side of the garment on the back. All two piece or larger garments like chemises arrive packed in this type of package by default.



*beautiful
packages*

Visit us at
www.faflingerie.com

Back cover: Garments No. D051 and No. I073



www.falingerie.com



TL-2011CAT

© 2010-2011 FEARLESS AND FUN LINGERIE. ALL RIGHTS RESERVED